

Color Form Tile

Style Number	5T112	
Collection	Color Frame + Color Form	
Product Type	Carpet Tile	
Construction	Standard	Data + Performance
Type of Manufacture	ISO 2424	tufted 1/12" 47.2 per 10cm
Aspect	ISO 2424	Multi-Level Pattern Loop
Dye Method	EN 994	100% Solution Dyed
Dimensions	EN 994	23 cm x 91 cm 9 in x 36 in
Primary Backing	ISO 2424	Petp Polyamide Non Woven
Secondary Backing	ISO 2424	Ecworx® Polyolefin Plastomer
Pile Fibre Composition	ISO 2424	Eco Solution Q® Polyamide 6
Total Thickness	ISO 1765	5.7 mm
Effective Pile Thickness	ISO 1766	2.8 mm
Total Mass	ISO 8543	2829 g/m²
Nominal Total Pile Mass	ISO 2424	576 g/m²
Effective Pile Mass	ISO 8543	336 g/m²
Pile Density	ISO 8543	0.122 g/cm³
Total Recycled Content	58% (pre-consumer 58% post-consumer 0%)	



Performance

Number of Tufts	ISO 1763	189,000/m² 40 per 10cm
Protective Treatments	SSP® Shaw Soil Protection	
Electrostatic Propensity	ISO 6356	≤ 2.0 kv (Stroll Test)
Use Classification	EN 1307	33 Commercial Heavy
Luxury Class	EN 1307	LC1
Dimensional Stability	EN 986	≤ 0.2%
Impact Sound Insulation	ISO 10140	22 Db (Predicted)
Sound Absorption Classification	ISO 354/11654	0.15 Aw Class E (Predicted)
Thermal Resistance m ² K/W	ISO 8302	0.064 M² K/W Tog 0.64
Dry Slip Resistance	ISO 13893	Pass/No Pulled Loops
Colour Fastness To Light	ISO 105-B02	>6
Flammability	EN 13501-1	Bfl-S1 (Adhered Testing)
Castor Chair	EN 985	≥2.4 Continuous Use

[Lifetime Commercial Limited Warranty](#) subject to installation in full accordance with manufacturer's instructions and a regular effective cleaning and maintenance programme.

Recommended Installation Method



Ashlar



Brick



Herringbone



Monolithic



22 dB

Corporate Headquarters +1 800 257 7429 | +1 706 532 7984 | Atlanta +1 404 853 7429 | Bengaluru +91 80 6773 0202 | Beijing +86 10 6568 588 | Chicago +1 312 467 1331 | Dubai +971 4 584 6956 | Hong Kong +852 2623 0371 | Latin America (Miami) +1 305 827 5912 | London +44 207 961 4120 | Los Angeles +1 800 233 1614 | Melbourne +61 3 9939 8543 | Mexico City +55 5010 7600 | Mumbai +91 22 6284 5050 | Nantong +86 400 800 7429 | New York +1 212 953 7429 | Paris +33 (0) 1 81 22 44 39 | San Francisco +1 415 955 1920 | Santiago +562 2431 5000 x 550 | São Paulo +55 11 3071 1702 | Shanghai +86 21 3338 4000 | Singapore +65 6733 1811 | Sydney +1 800 556 302

© 2024 Shaw Industries Group, Inc., a Berkshire Hathaway Company
May 11, 2024

16

EU.DOP/2895/CPR/1016/1017/T

OOSTERHOUT SHOWROOM, VAARTWEG 10, 4905
BL NETHERLANDS (NLD)

Notified Body 2895

22

UK.DOP/0338/CPR/1016/1017/T

SHAW EUROPE LIMITED BLACKADDIE RD,
SANQUHAR DG4 6DB, UNITED KINGDOM

Approved Body 0338

EN14041:2004/AC:2006

For use as an indoor floor covering as specified by the manufacturer

Coordinating Products

Carpet Tile: **Color Frame Tile**

Product Transparency

Shaw Contract is dedicated to providing clients with a building chemistry that's safe and dependable. Working together, we will help you meet your goals as they pertain to material health. EcoWorx® products with Eco Solution Q® Nylon are Cradle to Cradle Certified® Silver and assessed for impacts on human health and the environment. This product can be recycled. When it's time to replace, we can collect and recycle it through our Environmental Guarantee.*

Material Health & Environmental Certifications

Certifications below apply exclusively to the carpet tile rug itself and not the LokWorx Tabs adhesive

Declaration of Performance	EU.DOP/2895/CPR/1016/1017/T
Cradle to Cradle Certified®	Silver Level (Version 4.0)
Health Product Declaration (HPD)	1,000 ppm (Parts Per Million) Disclosure
Environmental Product Declaration (EPD)	3rd Party Certified in Accordance with ISO14044, ISO14025 & EN15804
Living Building Challenge (LBC)	Free of Red List Chemicals
Declare	LBC Compliant USA China
NSF 140	Gold
Building Research Establishment (BRE)	A+ Health/A+ Retail 0.372/0.498 Ecopoints USA
Singapore Green Label	Certified
Environmental Guarantee*	Re[turn] Reclamation Program* Through Our Environmental Guarantee, Shaw Pledges to Transport And Recycle Any Ecoworx Carpet.
Product Packaging	100% Recyclable
Country of Origin**	USA & China
BREEAM Contribution Credit	Certificate of Approval Schools/Offices/Health/Industrial Shed Retail

WELL V2 Contribution Credit

X08 Hazardous Material Reduction Part 1: Limit Hazardous Materials Optimization	C2C Silver Level (Version 4.0)
X10 Volatile Compound Reduction Part 1 (A): Manage Volatile Organic Compounds (VOCs) Optimization	C2C Silver Level (Version 4.0)
X11 Long Term Emissions Control Part 2: Flooring Optimization	Green Label Plus Certification: GLP9968
X13 Enhanced Material Precaution Part 1: Select Optimized Materials Optimization	C2C Silver Level (Version 4.0)
X14 Material Transparency Part 1: Promote Ingredient Disclosure Optimization	C2C Silver Level (Version 4.0)

Leed v4 Contribution Credits

MR Credit: Building Product Disclosure and Optimization
Environmental Product Declarations - Option 1: Environmental Product Declaration (EPD)

MR Credit: Building Product Disclosure and Optimization
Material Ingredients - Option 1: Material Ingredient Reporting

MR Credit: Building Product Disclosure and Optimization
Material Ingredients - Option 2: Material Ingredient Optimization

MR Credit: Building Product Disclosure and Optimization
Sourcing of Raw Materials - Option 2: Leadership Extraction Practices

EQ Credit: Low Emitting Materials
Option 1: Product Category Calculations

MR Credit: Interiors Life-Cycle Impact Reduction
Option 3: Design for Flexibility

3rd Party Certified in Accordance with ISO14044, ISO14025 & EN15804

C2C Silver Level (Version 4.0) or HPD (Version 2.1)

C2C Silver Level (Version 4.0)

Environmental Guarantee: Re[turn] Reclamation Program* | Through Our Environmental Guarantee, Shaw Pledges to Transport And Recycle Any Ecoworx Carpet.

Certified


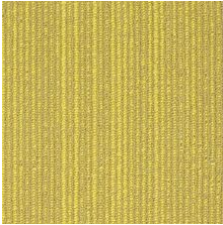



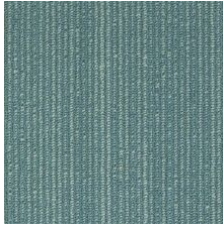

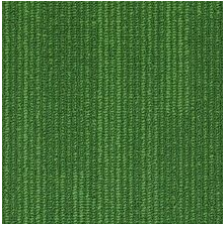
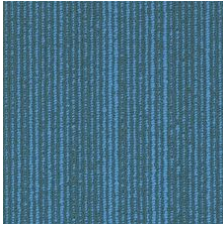

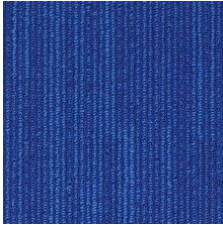
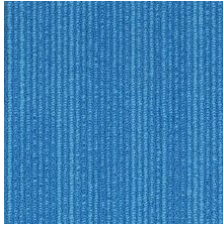






Ecoworx Tile with Lokdots Installation System

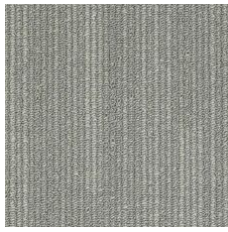
Memberships

WGBC Framework
UKGBC
Emirates Green Building Council
Chemsec

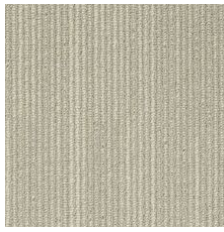
WGBC Framework
UKGBC
Emirates Green Building Council
Chemsec

Light Reflectance Value

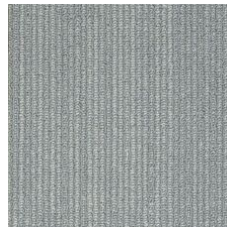
 Sand 81155 LRV 19.9	 Glowing 81211 LRV 26.9	 Frolic 81284 LRV 34.1	 Tricky 81323 LRV 9.2	 Hyper Green 81326 LRV 19.2	 Quirky 81327 LRV 14.2
 Enchanted 81370 LRV 10.9	 Imagine 81375 LRV 7.5	 Inspire 81405 LRV 9.7	 Day Dream 81415 LRV 11.5	 Charming 81429 LRV 5.8	 Hyper Blue 81436 LRV 10.5
 ImPLY 81485 LRV 4.8	 Figment 81486 LRV 5.8	 Paradox 81500 LRV 5.3	 Magic 81505 LRV 2.3	 Duplicity 81506 LRV 21.8	 Mask 81507 LRV 3.2



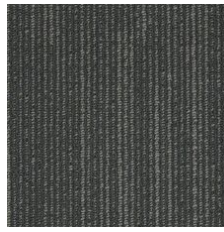
Mystic Grey 81515
LRV 17.5



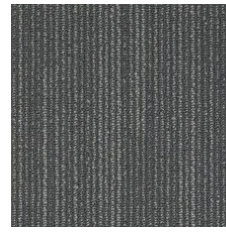
Mystery 81516
LRV 29.6



Crystal 81535
LRV 19.1



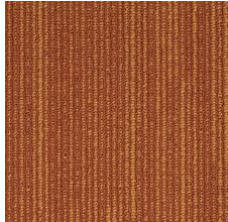
Coax 81549
LRV 4.7



Disappear 81557
LRV 7.1



Clouded 81595
LRV 13



Blaze 81668
LRV 11.5



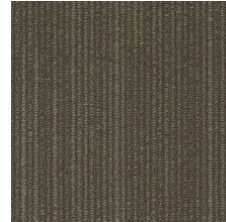
Mojo 81675
LRV 21.9



Vanish 81715
LRV 9.4



Pretend 81725
LRV 14



Impression 81751
LRV 5.4



Utopia 81755
LRV 18.7



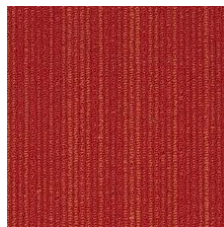
Observe 81760
LRV 9.6



Appearance 81761
LRV 10.3



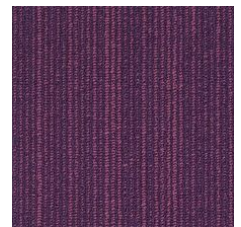
Aurora 81855
LRV 6.4



Stunt 81856
LRV 9



Ember 81870
LRV 8.4



Puzzle 81991
LRV 5

Additional Information

* To learn more about the recyclability of our products and our re[TURN], please visit shawcontract.com/sustainability.

**Meets or exceeds all local and national regulations in country of manufacture.

***This carpet is manufactured to be ADA compliant, but to be fully ADA compliant, the end-user must ensure the carpet is adhered to the floor and installed as outlined in the ADA standards.

[Installation Guidelines](#)

[Maintenance Guidelines](#)

[Lifetime Commercial Limited warranty](#)

Specifications are subject to nominal manufacturing variance. Material supply and/or manufacturing processes may necessitate changes without notice.

This product is an exclusive design and may not be duplicated in any manner. Use of this design in the creation of another product design is also strictly prohibited.

Visit shawcontract.com/testing for more information.



PVC-Free

Corporate Headquarters +1 800 257 7429 | +1 706 532 7984 | Atlanta +1 404 853 7429 | Bengaluru +91 80 6773 0202 | Beijing +86 10 6568 588 | Chicago +1 312 467 1331 | Dubai +971 4 584 6956 | Hong Kong +852 2623 0371 | Latin America (Miami) +1 305 827 5912 | London +44 207 961 4120 | Los Angeles +1 800 233 1614 | Melbourne +61 3 9939 8543 | Mexico City +55 5010 7600 | Mumbai +91 22 6284 5050 | Nantong +86 400 800 7429 | New York +1 212 953 7429 | Paris +33 (0) 1 81 22 44 39 | San Francisco +1 415 955 1920 | Santiago +562 2431 5000 x 550 | São Paulo +55 11 3071 1702 | Shanghai +86 21 3338 4000 | Singapore +65 6733 1811 | Sydney +1 800 556 302

© 2024 Shaw Industries Group, Inc., a Berkshire Hathaway Company
May 11, 2024

4 of 4